

MONTHLY MEMBERSHIP PROGRESS REPORT

District 11 A2

Results as of: 5/31/2026

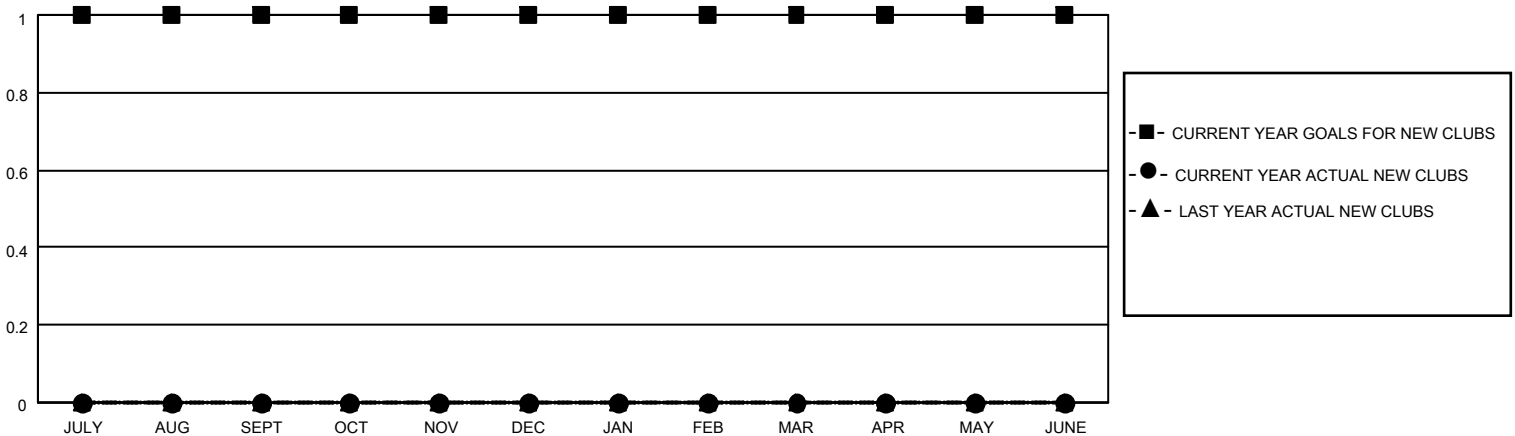
GMT:

LOCATION MICHIGAN

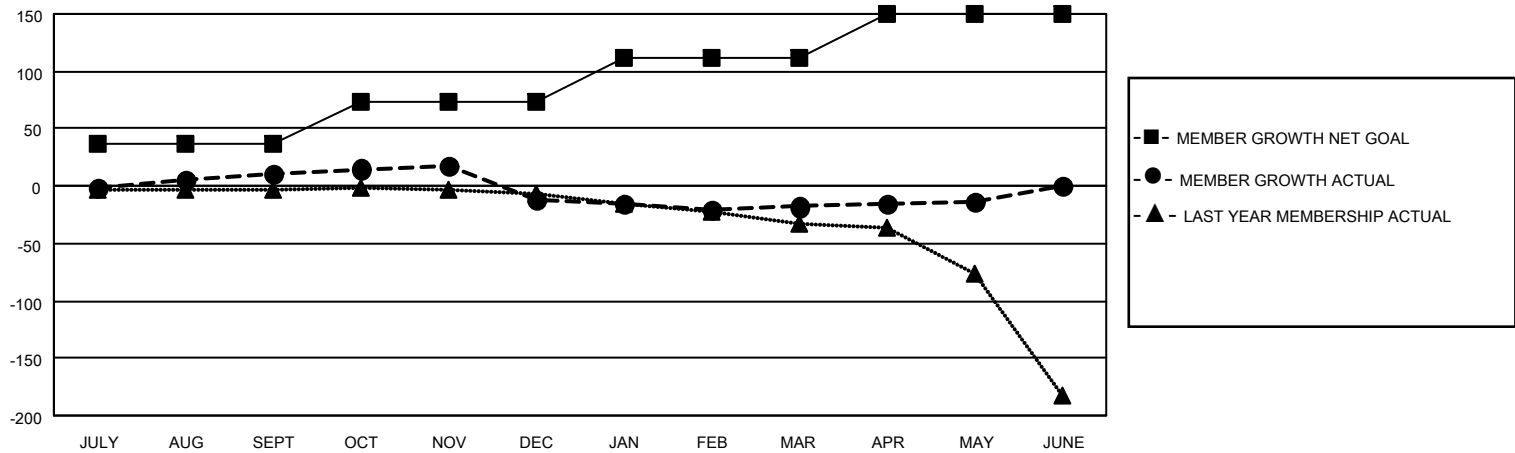
GMT CA

Clubs				Members			
RESULTS FOR 2025-2026				RESULTS FOR 2025-2026			
QUARTER	NEW CLUB GOAL	NEW CLUBS	DROPPED CLUBS	QUARTER	MEMBER GROWTH NET GOAL	MEMBER GROWTH ACTUAL	DROPPED MEMBERS ACTUAL (including transfers)
JULY/AUG/SEPT	1	0	0	JULY/AUG/SEPT	37	38	15
OCT/NOV/DEC	0	0	0	OCT/NOV/DEC	37	30	48
JAN/FEB/MAR	0	0	0	JAN/FEB/MAR	38	26	28
APR/MAY/JUNE	0	0	0	APR/MAY/JUNE	38	12	7

GOALS AND ACTUAL NEW CLUBS CUMULATIVE



GOALS AND ACTUAL MEMBERS CUMULATIVE



DROPPED CLUBS: 0	18 CLUBS OF 28 ADDED 1 OR MORE NEW MEMBERS	GENDER DISTRIBUTION
DROPPED MEMBERS	CLICK HERE FOR CUMULATIVE MEMBERSHIP DATA	MALE 656 (59.69%)
DECEASED 15		FEMALE 443 (40.31%)
CLUB CANCELLED 0		TOTAL FAMILY UNIT MEMBERS 204
OTHER 83		FAMILY MEMBERS PAYING HALF DUES 104
TOTAL 98		